

MVS3150-LV

MV Turnkey Station for 1500 Vdc String Inverter SG250HX



SAVED INVESTMENT

- Up to 3.5 MW block design
- Easy transportation and installation due to standard container design

EASY O&M

- Online analysis for fast trouble shooting
- Modular design, main devices easy replacement
- All pre-assembled for easy set-up and commissioning

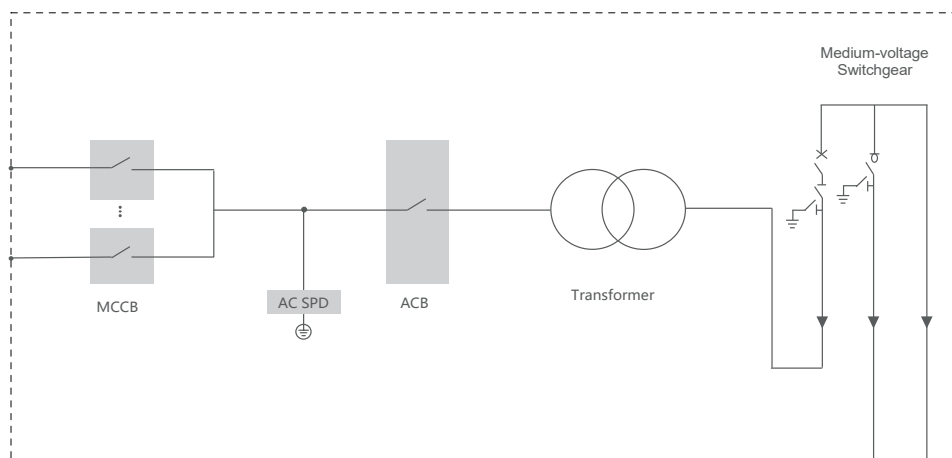
SAFETY

- MV and LV isolated, with independent control room
- All key components front accessible

RELIABLE

- All components type-tested
- Compliance with standards: IEC 60076, IEC 62271, IEC 61439

CIRCUIT DIAGRAM



Type designation	MVS3150-LV
Transformer	
Transformer type	Oil immersed
Rated power	3150 kVA @ 40 °C
Max. power	3500 kVA @ 30 °C
Vector group	Dy11
LV / MV voltage	0.8 kV / 10 – 35 kV
Maximun input current at nominal voltage	2525 A
Frequency	50 Hz / 60 Hz
Tapping on HV	0, ±2 * 2.5 %
Peak efficiency index	≥ 99.445 %
Cooling type	ONAN (Oil Natural Air Natural)
Impedance	7 % (±10 %)
Oil type	Mineral oil (PCB free)
Winding material	Al / Al
Insulation class	A
MV Switchgear	
Insulation type	SF6
Rate voltage	24 – 36 kV
Rate current	630 A
Internal arcing fault	IAC AFL 20kA / 1s
Qty.of feeder	3 feeders
LV Panel	
ACB specification	3200 A / 800 Vac / 3P, 1 pcs
MCCB specification	250 A / 800 Vac / 3P, 14 pcs
Protection	
AC input protection	Circuit breaker
Transformer protection	Oil-temperature, oil-level, oil-Pressure
Relay protection	50 / 51, 50N / 51N
LV overvoltage protection	AC Type II (optional: AC Type I+II)
General Data	
Dimensions (W*H*D)	6058 *2896 * 2438 mm
Approximate weight	15 T
Operating ambient temperature range	-20 to 60 °C (optional: -30 to 60 °C)
Auxiliary power supply	5 kVA / 400 V (optional: max. 40 kVA)
Degree of protection	IP54
Allowable relative humidity range (non-condensing)	0 – 95 %
Operating altitude	1000 m (standard) / > 1000 m (optional)
Communication	Standard: RS485, Ethernet, Optical fiber
Compliance	IEC 60076, IEC 62271-200, IEC 62271-202, IEC 61439-1, EN50588-1